

Quick Start Guide

System Requirements

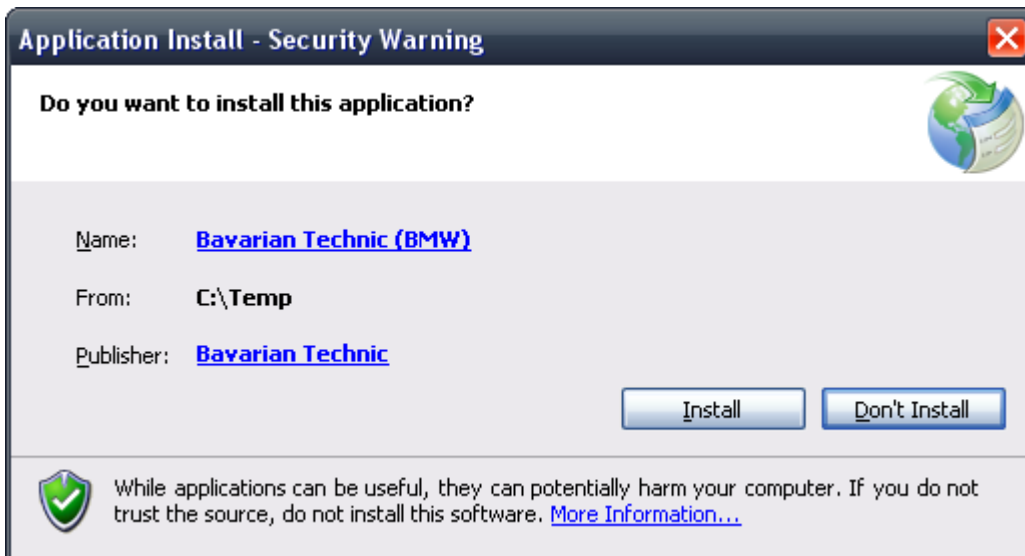
- Windows XP or Windows Vista (All versions, including both 32 and 64 bit versions)
- 1 GB RAM
- 1.8Ghz or faster processor
- 40 MB available disk space
- Internet Explorer 6.0 or newer
- Available USB Port
- Available Internet connection
- Screen resolution of 800x600 or greater
- Microsoft® .NET Framework 2.0 ([free download](#))
- Adobe Acrobat Reader (for reading and printing documentation)

Installing the Software

Bavarian Technic does not distribute a software CD with the cables. Install the software from the internet before connecting the cable.

To install Bavarian Technic:

1. Go to <http://www.bavariantechnic.com>.
2. Select *Downloads* from the left column.
3. If needed, click *Microsoft® Internet Explorer* to install Internet Explorer version 6.0 or later.
4. If needed, click *Microsoft® .NET framework* to install .NET framework version 2.0.
5. Click *Bavarian Technic cable drivers* to install the necessary cable drivers.
6. Click *Bavarian Technic software program* to start the Bavarian Technic installation.
7. Click the *Install* button when prompted with the security warning (shown below).



When the installation is complete, the software starts automatically. Close the program before connecting the cables as described below.

Using the Bavarian Technic Tool

Upon successful installation of the software, you are ready to connect the cables and start the program.

Connecting the Cables

Depending upon the kit you ordered, you will have one, two, or three cables. With the car's ignition off and before starting the software, connect the cables between your computer and car as follows:

- Connect the standard interface cable's USB connector to the USB port on your computer.
- Connect the OBDII-end of the standard interface cable to the diagnostic port on your car.
- If you purchased the 50' extension cable, you can connect it between the male OBDII-end of the standard interface cable and the car.
- If you are working on early-model cars and have the early-model adapter cable, connect it between the standard interface cable and car or between the 50' extension cable and the car.

After the cables are connected, turn the car's ignition to the 'on' position and start the Bavarian Technic program.

Starting the Program

Start the software program after you connect the cables. To start the program:

1. Click the Windows *Start* button.
2. Select *All Programs | Bavarian Technic | Bavarian Technic (BMW)*.

Upon starting the program, you will see the *Launching Application* screen followed by a series of start-up dialogs including the *Customer/Vehicle Information* and *Choose Vehicle* screens. Optionally, complete the information on the *Customer / Vehicle Information* screen, or click *Cancel* and immediately select a model from the list.

